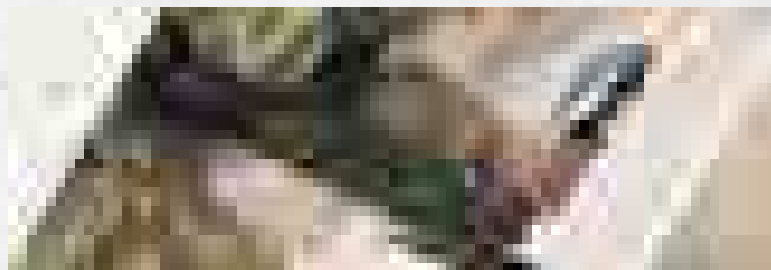


# MDS-10 Dual Sensor Detector

The MDS-10 combines unique Metal Detection (MD) and Ground Penetrating Radar (GPR) technologies to provide superior performance in the detection of ferrous and non-ferrous metal and conductive targets plus non-metal objects.



## EFFECTIVE

Combining Minelab's patented Simultaneous Multi-Frequency Digital technology and Chemring's proven Ultra WideBand Impulse Radar to detect all conductive and non-conductive targets of interest in varied soil conditions and operating environments.

## RUGGED

Constructed from impact resistant materials and designed to survive in any operating environment (MIL-STD-810G).

## SENSOR COMBINATION

Metal Detection and Ground Penetrating Radar sensors able to operate independently or simultaneously, providing selectable visual, haptic (vibration) and audio alerts to the operator.

## COMPACT

Extremely compact and lightweight detector to reduce operator fatigue.

## EASE OF USE

Comprehensive User Interface designed for intuitive operation and minimising operator training requirements.

## SAFE

Inability to accidentally switch off both sensors and all operator alerts — provision of a "heartbeat" during operation — and Built-In-Test equipment to monitor and confirm detector functionality.

# MDS-10 Product Features



Lithium-ion Rechargeable Battery

Adjustable Armrest

Control Box

User Interface

Earset Connector

Speaker

Folding Handle

Camlocks

Telescopic Shafts

## ROBUST / CONVENIENT

Impact resistant hard transit case contains carry bag, detector and accessories.

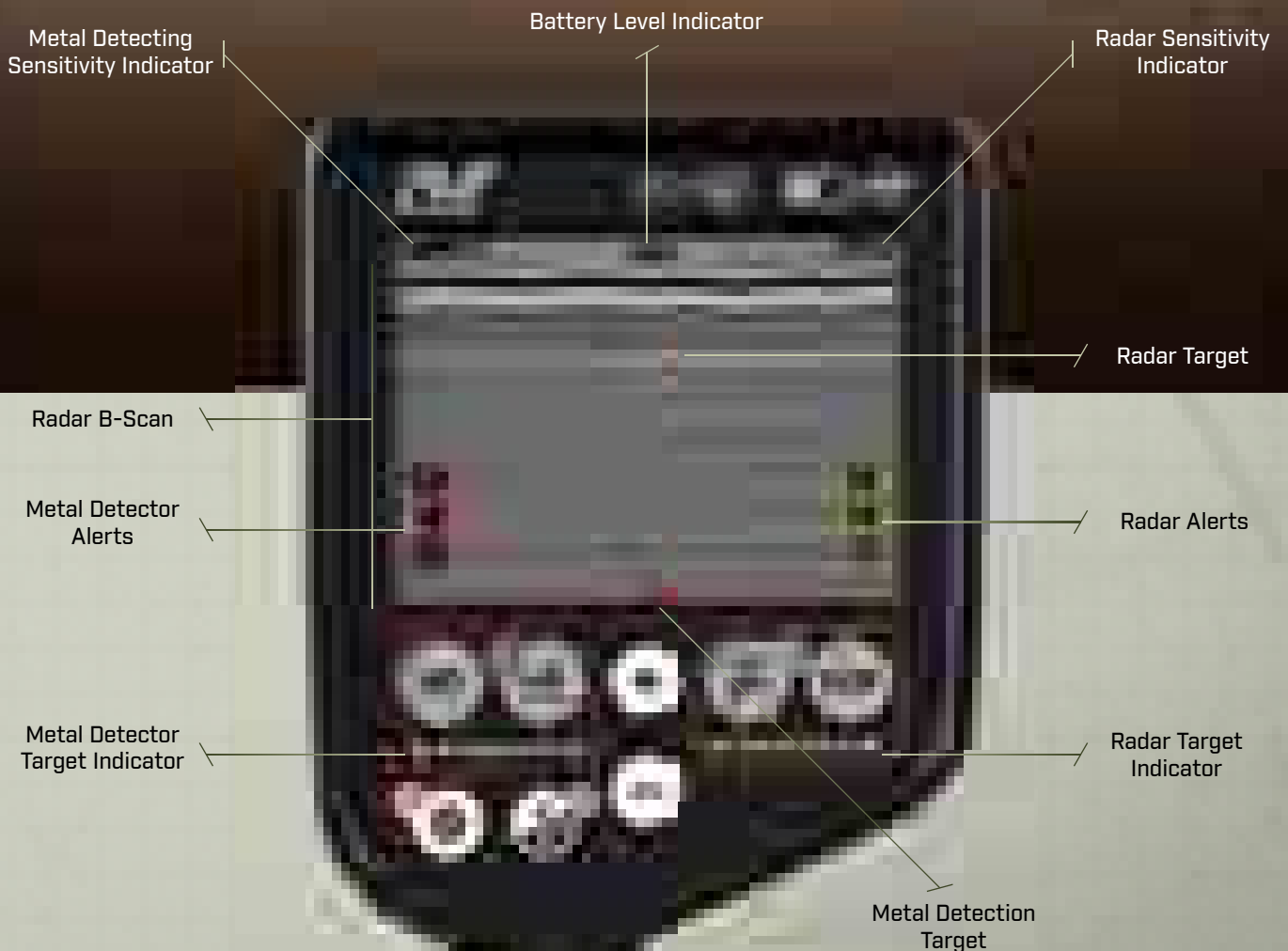
## COMPACT / QUICK TO DEPLOY

GPR Antennas

Metal Detector Coil

# MDS-10 User Interface

The MDS-10 is easy to operate – even with one gloved hand. The 3.5 inch waterproof and shockproof QVGA display, compatible with Night Vision Goggles, delivers optimal performance during tactical operations.



# MDS-10 Key Features

- Variable Metal Detection and Ground Penetrating Radar sensitivity with volume control
- Detection, Interrogation and Pinpointing modes
- Fully enclosed and protected cables
- Fast and accurate location of targets
- Continuous real-time display of Metal Detection and Ground Penetrating Radar detections with the ability to pause graphical image for increased scrutiny of potential target
- Tactical Mode for night operations
- Waterproof – IP68
- Adjustable search head
- Selectable audio, haptic (vibration) and visual operator alerts
- Li-ion battery often used in Tier 1 military radios and optional AA battery pack
- Battery charger
- Hard case and carry bag
- Compatible with night vision goggles
- Intuitive user interface ensures operator training is kept to a minimum of time
- GPR transmission automatically stops when the detector is not in use by the operator

## MDS-10 SPECIFICATIONS

<b>Collapsed Detector Dimensions</b>	485 × 152 × 195 mm
<b>Extended Detector Dimensions</b>	1567 × 275 × 195 mm
<b>Detector Weight</b>	2.8 kg (6.2 lbs)
<b>Li-ion Battery</b>	6.8 Ah <b>Battery Life:</b> >7 hours
<b>AA Battery Pack</b>	For use with AA alkaline or rechargeable batteries
<b>Detection Alerts</b>	All alerts independently configurable, Audio Speaker, Audio Headphones, MD and GPR target Indicators (with Night Vision Goggles compatibility), Vibration Motor (Haptic feedback) and Colour LCD 3.5" with Night Vision Mode
<b>Waterproof</b>	≤3 meters
<b>Standards</b>	MIL-STD-810G
<b>EMC</b>	MIL-STD-461G
<b>IP Rating</b>	IP68
<b>Operating Temperature</b>	-30°C to +60°C
<b>Storage Temperature</b>	-50°C to +80°C
<b>Metal Detection Sensor</b>	<b>Technology:</b> Simultaneous Multi-Frequency Digital <b>Coil:</b> 269 × 191 mm Mono Transmit, Figure 8 Receive Coil <b>MD Modes:</b> Detection / Interrogation / Pinpointing <b>Calibration:</b> Ground Balance and Noise Cancel
<b>Ground Penetrating Radar</b>	<b>Technology:</b> Ultra-Wide Band (UWB) Impulse Radar <b>Calibration:</b> Skyshot (2-3 seconds calibration time)

## COUNTERMINE

☎ +61 8238 0888  
✉ countermin@minelab.com.au

[www.minelab.com](http://www.minelab.com)



## A Minelab and Chemring Product

As a world leader in metal sensing technology, Minelab strives to continually improve its product range. Minelab reserves the right to introduce changes to the design, technical features and accessories of this product. MDS-10® and MINELAB® are registered trademarks of Minelab Electronics Pty. Ltd.

Copyright © 2020